

Time to Complete Job: 9 Hours

Tools and Equipment Used:

- Rivet Gun
- 3/8-inch Drill
- Die-Grinder
- Chisel
- 3/8-inch Magnalok Gun
- 3/8-inch Huck Gun
- 1/4-inch Huck Gun
- 1/4-inch Magnalok Gun
- Bom Gun
- 17/64-inch Drill Bit
- Torch / Plasma Cutter
- 27/64-inch Drill Bit
- 1/4-inch Drill Bit
- Clamps
- Grinder

Procedure:

1. Unplug corner light and make sure wiring is not connected to the corner post
2. If stainless or painted insert in place:
 - a. Remove (4) 1/4-inch stainless mag rivets
 - b. Slide insert out.



3. Drill out and remove the seven 5/16-inch rivets that connect the top rail to the corner radius.



4. Remove all 3/8-inch magnaloks on top rail.



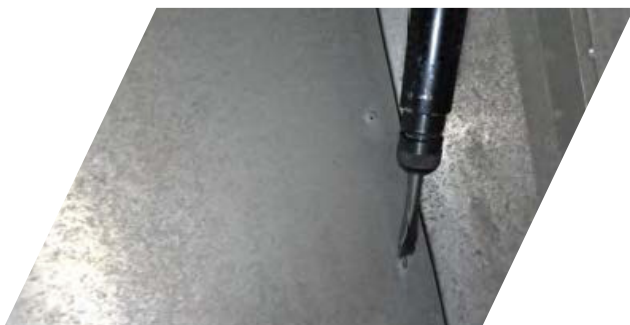
5. Remove (2-3) 3/8-inch magnaloks that connect the corner radius to the lower rail.



6. Remove all 1/4-inch SS magnaloks on the sidewall connected to the corner radius.



7. Remove the magnaloks on the inner liner if trailer has one in the nose.



8. Remove all 1/4-inch rivets on the nose panel of the trailer connected to the corner radius.



9. Cut the four bombs that connect the upper coupler to the corner radius.

10. Pull the side and front panels out as far as possible and slide the corner radius down and out of the trailer.

11. Clean/buff any exposed steel and paint if necessary.

12. Mylar tape the corner of the upper coupler where steel and aluminum meet.