



# ***EQUIPMENT TRAILERS***

## ***INSTALLATION MANUAL***

Toolbox Extension Kit



# **TIMPTE**

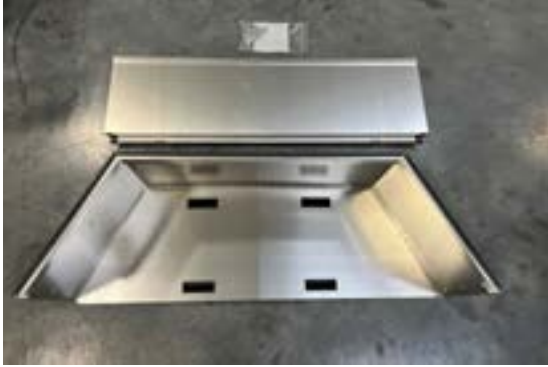
## **EQUIPMENT TRAILERS**

Congratulations on your recent purchase of the TimpTE Equipment Trailer. Here at TimpTE, we take pride in the quality of our trailers and hope your experience with our company meets all expectations and standards. If at any time you experience issues, please do not hesitate to contact your Authorized Dealer for service or the TimpTE warranty department.



This manual contains information and instructions on the installation of our Toolbox Extension Kit accessory. Please make sure to read this manual prior to beginning the installation and make sure all safety precautions are followed.

# Installation Manual: Toolbox Extension Kit



Locate your Toolbox Extension kit and verify all items are included:

- Toolbox Extension Back Plate
- Toolbox Extension Front Plate
- Internal Cover plates (left/Right) with grip pockets
- Hardware Kit



Tools needed to complete installation:

- Drill with phillips bit
- #2 Phillips Screwdriver
- 1/4" wrench
- 11/32" wrench



First, remove the gas strut from the toolbox lid by releasing the brackets holding the gas struts to the toolbox with a flat head screw driver.



Next, remove screws from hinges on the backside of the toolbox so the entire lid can be removed.



Remove plastic caps from inside the toolbox using a screwdriver.



Place your front extension plate on top of existing toolbox.



Place 1/4" bolts into pre-drilled holes.



Using your 1/4" wrench tighten your bolts around the front plate.



Place your back extension plate on top of the existing toolbox.



Place and tighten bolts on rear panel using your 1/4" wrench.



Place internal cover plates inside the toolbox accordingly.



Place lid on top of toolbox extension and place screws into pre-drilled holes. Using your drill and phillips drill bit tighten all screws on the hinges of the lid.



Using your 11/32" bolt driver fasten down the gas struts inside of toolbox extension.



Connect gas strut bracket to the lid of the toolbox.



Once you have finished all of the steps your toolbox extension is complete.

**TIMPTE**

*Since 1884*